

**SEASON
1969-70**

No 3251



Tuesday, 7th October

TODAY'S VISITORS

SWINDON T.

7-30 p.m.

Official Programme 1/-

including FOOTBALL LEAGUE REVIEW

CARLISLE UNITED

CAR INSURANCE — BE SURE

- * PREMIUM SAVINGS
- * SOUND COVER
- * LOCAL OFFICE

ASK
FOR
OUR
QUOTATION

CUMBRIA

INSURANCE BROKERS LTD

29 Lowther St., Carlisle
Tel. 28181 (4 lines)

A. NEVIN

FRUITERERS and FLORISTS
Continental Fruit and Vegetables
WREATHS, BOUQUETS AND SPRAYS
Orders promptly attended to and delivered
73b BOTCHERGATE, CARLISLE
Telephone 22238

McHARDY

9, LONDON ROAD : CARLISLE
LEADING
FISHING TACKLE & GUN DEALERS
Fine Display — Well worth your visit
GUN ROOM NOW OPEN

FOR ALL YOUR
UPHOLSTERY REQUIREMENTS
BORDER UPHOLSTERY
Limited

10 DUKE STREET : CARLISLE

R. UNDERWOOD
JOINER

7, BEACONSFIELD STREET, CARLISLE
All Joinery Work promptly dealt with
Tel. 21033

BE (UNITED) AT
Dentonholme Handicrafts
105 DENTON STREET
All Joinerywork by Best Tradesmen

A warm welcome awaits supporters at
THE MING WAH
CHINESE RESTAURANT
Telephone: 26626
61 BOTCHERGATE, CARLISLE
Open: Mon.-Sat. 11-30 a.m. - 11-0 p.m.
Sunday 12 noon - 11-0 p.m.
Special 3 Course Lunch 11-30 a.m. - 2-0 p.m.

ROLAND GRAHAM
PAINTER & DECORATOR
Interior and Exterior
135 Thomlinson Ave., Raffles, Carlisle
Tel. 27580

PADDY WATERS
NEWSAGENT : TOBACCONIST
STATIONER : CONFECTIONER
8 London Rd., Carlisle

W. JOHNSTON
BUILDING REPAIRS
RAFFLES : CARLISLE
Carlisle 27888.

Tyres and Components
The Motorist's Discount Shop
Greystone Road., Carlisle. Tel. 27412
Discounts up to 40%
New 12 Volt Batteries from 90/-
150 yds. from Brunton Park
Get your tyres fitted while at the Match!

FOR ROAD TRANSPORT
J. & W. WATT, LTD.
Carlisle/London Trunk Service

Caldew Garage, Metcalfe St., Carlisle
Tel Carlisle 22311/2 London: Bowmans Green
2682 Liverpool: Garston 5085/6 Falkirk 21472

Tel. No. 2277/8
WATSON'S (Waverton)
Limited
COPPINS GARAGE,
WAVERTON, WIGTON, CUMBERLAND
Tyre Distributors : Batteries : Petrol
Oils, Etc. : Tractors a Speciality
Open 8 a.m. to 9 p.m. Weekdays
9 a.m. to 9 p.m. Sundays



CARLISLE UNITED A.F.C. (1921) LIMITED

BRUNTON PARK, CARLISLE.

Telephone Carlisle 26237

Directors:— E. G. Sheffield (Chairman), G. W. Reed (Vice-Chairman), J. A. Bendall, J. W. Cullen, H. A. Jenkins, J. Johnston, J. C. Monkhouse, H. Sherrard, T. L. Sibson.

Manager: R. Stokoe.

Secretary: J. D. Dent.

In an age where one of the national pastimes seems to be a deliberate flouting of authority, it's inevitable I suppose that the hooligans should continue to wreck the 'soccer specials' and use the anonymity of football crowds to get away with their particular brand of violence.

That it's all happening in other fields doesn't make it any less damaging to the image of soccer and another black weekend has brought the promise of an immediate investigation from the Football League.

Don't let's kid ourselves that up here where only the really big occasion ensures a near-packed house, we are immune from it all.

There were enough skirmishes at the Warwick Road end on Saturday and the sobering sight of stretcher-cases to suggest that the evil is all-embracing.

In any case the events at Wolverhampton affect us all, whether we are playing the game, watching it or writing about it.

If, as has been reported, the terraces at Molineux erupted after the sending off of Derek Dougan, it leads greater weight to the theory that in many cases fans are motivated by what goes on on-field.

Moreover, to a fan a few score yards away from the action, a sending-off for swearing or non-violent act must be far more difficult to understand than a blatant foul that earns a free-kick as the only reproving gesture.

I must admit I have a great deal more sympathy for referee Keith Walker who, for the second time in a week, finds himself the centre of controversy than I have for Irishman Derek Dougan.

He interprets the rules impartially—and while I'm fully aware of the heat and tension in present-day high stakes soccer, I feel that Dougan — 'under a suspended sentence already, has only himself to blame for lack of control.

Mr. Walker isn't to blame if the punishment doesn't fit the crime and if it is felt that greater harm is being done in inciting the potential trouble-makers on the terraces than is done to the match officials on the receiving end of the verbal warfare from players, then let's differentiate between the wilful acts and the non-violent infringements of the rules.

Make swearing and arguing with match officials punishable by an automatic fine.

And if there's a little tolerance and humour on both sides, so much the better.

One referee who unfortunately retired years ago had his own answer to backchat — solemnly offering his whistle to anyone who felt he could do a better job . . . and it was enough.

IVOR BROADIS,

'Newcastle Journal' & 'Sunday Sun'
Sportswriter.



Tel.
BURGH-BY-SANDS
329.

W. BIMSON & SONS

(BUILDING CONTRACTORS)

Alwyn House, Burgh-by-Sands

" A BOX IS A BOX, IS A BOX, IS A BOX,
IS A BOX, IS A "

" SO WHAT? "

" We make them, that's what. ROUND,
SQUARE, TRIANGULAR, THE LOT."

THE METAL BOX CO. LTD.

James Street, Carlisle

SWINDON TOWN — By Tony Pullein

Memories of Swindon's sensational Wembley League Cup final victory over Arsenal last season will remain indelibly inscribed in the minds of all who saw it for many years. In one of the finest games ever played at Wembley, the Wiltshire side completely outplayed their First Division opponents to win 3—1 in extra time.

Swindon followed that triumph by crushing Italian first division side A.S. Roma 5—2 on aggregate in the first of what could become a series of challenge matches between the Italian and English League Cup winners. Swindon won their home leg in

magnificent style, cruising to a 4—0 victory a couple of weeks ago.

True to their modern image, Swindon went out of the League Cup this season almost as gloriously as they triumphed at Wembley. They lost 0—1 at Oxford in one of the most exciting cup-ties ever seen on that ground.

Now Swindon will be concentrating on consolidating the Second Division status they won this season. They started quite well, picking up 13 points from their opening 12 League games. Unless they won at Bolton on Saturday, they have only one away League win to their credit, though. They succeeded 2 — 0 at Aston Villa. Swindon drew at Cardiff (2-2) and Middlesbrough (0-0) but were beaten at Blackburn (0-2), Blackpool (2-3) and Queen's Park Rangers (0-2).

This is only the second time Swindon have visited Brunton Park for a League game. Their previous trip, in 1962/63, ended in a goalless draw. We lost 0-2 at Swindon that year but we did a little better when we went to the County Ground in August, coming away with a 2—2 draw.

The Swindon club was founded in 1881 by a clergyman. They were one of the original members of the Southern League

THE RITZ CAFE

21 BOTCHERGATE

CARLISLE

Meals Served from 9-30 a.m. — 7-30 p.m.

OPEN EVERY SUNDAY

ELLENSIDE GARAGE

BLENNERHASSET

(J. Blacklock & Sons Ltd.)

MOTOR ENGINEERS

NEW AND USED CARS

Phone: Aspatria 345.

H. SMITH

WASHING MACHINE REPAIRS
ALL MAKES

Estimates Given

Repair Specialist for
ROLLS - DUOMATIC - VACTRIC
ADA

Telephone: 21635.

17a Edward Street - Carlisle

in 1894, later winning the championship on two occasions, and it wasn't long before they won national acclaim. In 1910 they fought their way to the semi-final of the F.A. Cup defeating First Division Spurs. (3-2), and two Second Division sides, Burnley (2-0) and the divisional champions-to-be Manchester City (2-0) on the way before succumbing to the reigning Football League champions, Newcastle United, 0-2 at Tottenham.

In 1911, as Southern League champions, they met Football League champions Manchester United in the F.A. Charity Shield, losing a goal feast by eight goals to four. A year later they again reached the F.A. Cup semi-final.

Swindon became members of the Third Division (South), along with all the other Southern League first division sides, in 1920. And they made a flying start to

their League career, finishing in fourth place — a position they were unable to improve upon until winning promotion 43 years later!

It was during the early 'sixties that the Swindon club instilled itself with great ambition. Players, who were to become international stars, were discovered in a region never previously renowned for its soccer talent and, in 1962/63, a highly eloquent Swindon side gained deserved promotion to the Second Division.

For a while they threatened to move further up into Division One. They led the Second Division for several weeks before their confidence mysteriously drained away. A bad spell took them well down the table; the following season they returned to Division Three. There they remained until regaining their place this year.

H. C. PATERSON

BUILDER & CONTRACTOR

FOR YOUR MODERN HOME

Developments include

THIRLWELL AVENUE

Adjacent to Football Ground

For details ring SCOTBY 232

or CARLISLE 24587

VOR BROADIS

writes in

THE JOURNAL

every morning

SUNDAY SUN

every Sunday



ECONOMY SERVICE

**MOORVILLE GARAGE LTD.,
Kingstown Rd., Carlisle**

OPEN from— 8 a.m. to 8 p.m.

FOR PETROL SALES

Plus Treble Green Shield Stamps

Good Repair Service. Tel. Carlisle 22172

'SPORTSMAN'

•
YOUR SPORTS
and
CAMPING CENTRE

•
15-17 Globe Lane, Carlisle

THE MEN OF SWINDON TOWN — By Tony Pullein

PETER DOWNSBOROUGH (Goalkeeper). A bargain £3,000 buy from Halifax in 1965, Peter joined Halifax from school and made the first-team before signing professional in 1960. He has turned in many outstanding performances for Swindon — none better than at Wembley in last season's League Cup final.

ROD THOMAS (Right back). Rod is the only man in post-war soccer to win his first seven full international caps while playing in the Third Division. Swindon picked Rod up from Gloucester City, put him in the senior side in 1965/66 and now he is a regular choice for Wales.

JOHN TROLLOPE (Left back). A broken arm probably cost John a fabulous League record. His injury, at Hartlepool last season, ended a run of 360 consecutive League appearances for the club — only 41 short of the League record which he would most certainly have cracked.

JOE BUTLER (Right half). Joe kicked-off with Newcastle, his home town club. Originally a full-back, he made his League debut in 1963/64, moved to Swindon in 1965 and has now been developed into a very fine wing-half.

FRANK BURROWS (Centre half). A Scot who began his career with Raith Rovers, Frank cost Swindon £12,000 when they persuaded Scunthorpe to part with him last season.

MICHAEL BLICK (Centre half). While Burrows has been out through injury his place was taken by young Michael, who made his League debut two seasons ago but has had only some half-a-dozen chances in the first-team.

STAN HARLAND (Left half). Welcome back to Brunton Park Stan! Skipper Stan was a Burnley amateur but turned pro. at New Brighton. He moved to Everton but didn't make the League grade until signing for Bradford City in 1961. He played two seasons with us before joining Swindon three years ago.

GALLOWS HILL SERVICE STATION

London Road, Carlisle.

FIRST IN SERVICE
TYRES
BATTERIES

At Reduced Prices

Repairs : Crypton Tuning

Phone 26592

REGULAR DELIVERIES TO ALL PARTS
STORAGE AND DISTRIBUTION

•
A1 EXPRESS

PARCEL DELIVERY SERVICE

DURRANHILL TRADING ESTATE

Telephone: Carlisle 25645

<p>Fresh and crisp as an early Spring VEGETABLES From J. F. NOBLE MARKET GARDENER LINGEY CLOSE NURSERY, DALSTON, CARLISLE</p>	<p>JIM TERRIS is RIGHT BACK IN THE ELECTRICAL GAME For everything Electrical, 22717 Showroom : 112 DENTON STREET</p>
<p>Lawn Mowers Sharpened & Repaired (All Makes) Collection and Delivery Carlisle Garden Machine Centre Swifts Mews, Strand Road, Carlisle Tel. 28704</p>	<p>We're going to paint the Town Red ! ! (Then we'll wallpaper it!) Walker & Handford, Decorators 14, Troutbeck Drive, Orton Estate, Carlisle (N.B. We take on smaller jobs as well.)</p>

JOHN SMITH (Outside-right). Former England youth and under-23 cap, John kicked off with West Ham as a wing-half. After holding a regular place for four years, he moved to Tottenham in 1960. But it was a bad move for John rarely got a League game with Spurs. Consequently, he shifted to Coventry, then had short spells with Orient and Torquay before linking with Swindon last year.

CHRIS JONES (Inside forward). Chris developed in Manchester City's junior teams, rising to their First Division side in 1966/67. But he didn't manage to shift any of the big stars on a permanent basis so he moved to Swindon last season.

ROGER SMART (Inside forward). Roger is a product of Swindon schools football who got his first taste of League football in 1961/62. He helped Swindon into the Second Division for the first time in 1963 when he really began to establish himself as a regular and now looks back on over 200 League games for them.

PETER NOBLE (Inside forward). A native of the North-East, Peter started with Newcastle and cost Swindon £10,000 in January, 1968. He recently bagged hat-tricks in successive games against Charlton (League) and Swansea (League Cup).

ARTHUR HORSFIELD (Centre forward). Middlesbrough spotted Arthur in Newcastle junior soccer and he continued his scoring ways in their reserve teams until given his chance in the League team in 1963/64. All-told he scored 51 goals in 107 full League games for Middlesbrough — including 22 in 1966/67 — before he moved to Newcastle last January. Swindon signed him in May.

DON ROGERS (Outside left). An England under-23 international, Don has been a regular for six seasons and top scorer for the past three campaigns. He hit two glorious goals at Wembley in the League Cup final. Though several First Division clubs have tried to sign him, Swindon have turned down all offers.

DON HEATH (Forward). Don first signed professional for Middlesbrough but he never managed to get a League game with them. He moved on to Norwich City where he won himself a regular place in the senior team in 1964/65. For three years he was a member of the senior squad, then he shifted to Swindon in September, 1967.

<p>JOHNSTON & DUFTON Clothiers and Outfitters CITADEL ROW, CARLISLE.</p>	<p>are UNITED in their efforts to SCORE with you. We Transfer our goods to the individual OUR FEES are moderate — DISPLAYS can be seen at the HOME GROUND, Citadel Row and 91, English Street, CARLISLE.</p>
<p>P. MARCONI 51, PARKSIDE, ST. ANNS Off Kingstown Rd. Tel. 22465 Fish and Chips : Coffee Bar Open every day except Monday — 11.30 to 1.30; 4.30 to 11.30 p.m.</p>	<p>The "CENTRE" for your MEAT ! J. NATTRASS Family Butcher 13-14 NEW MARKET, CARLISLE Specialists in Prime English Beef, Lamb and Pork Telephone: CARLISLE 21959</p>

FIXTURES AND RESULTS 1969-70

FOOTBALL LEAGUE

Date	Opponents	Venue	K.O.	Result		Acc'd Points	L'ge Pos'n	Crowd	Receipts (excluding season tickets)
				F	A				
1969									
Aug. 9	S. Cardiff City	H	3-00	2	3	—	—	10,506	£2,201
" 16	S. Swindon Town	A		2	2	1	16	17,055	£3,540
" 19	T. Aston Villa	H	7-30	1	1	2	15	12,504	£2,744
" 23	S. Middlesbrough	H	3-00	1	0	4	13	12,578	£2,767
" 26	T. Bolton Wand'rs.	H	7-30	2	1	6	8	11,682	£2,509
" 30	S. Norwich City	A		0	1	6	13	14,659	£2,788
Sept. 6	S. Hull City	H	3-00	2	1	8	11	10,049	£2,038
" 13	S. Millwall	A		2	4	8	13	10,345	£2,339
" 17	W. Leicester City	A		2	1	10	10	24,434	£5,048
" 20	S. Preston N.E.	H	3-00	1	0	12	7	9,782	£1,988
" 27	S. Birmingham City	A		1	1	13	7	28,765	£5,500
Oct. 4	S. Huddersfield T.	H	3-00	0	2	13	8	9,721	£1,966
" 7	T. Swindon Town	H	7-30						
" 11	S. Watford	A							
" 18	S. Queens Pk. Rngs.	H	3-00						
" 25	S. Bristol City	A							
" 29	W. League Cup 5								
Nov. 1	S. Portsmouth	H	3-00						
" 8	S. Oxford United	A							
" 12	W. Aston Villa	A							
" 15	S. Blackburn R. (1)	H	3-00						
" 19	W. Lge. Cup Semi-F.								
" 22	S. Charlton Athletic	A							
" 29	S. Sheffield Utd.	H	3-00						
Dec. 3	W. Lge. Cup Semi-F.								
" 6	S. Blackpool (2)	A							
" 13	S. Millwall	H	3-00						
" 20	S. Hull City	A							
" 26	F. Middlesbrough	A							
" 27	S. Norwich City	H	3-00						
1970									
Jan. 3	S. F.A. CUP 3								
" 10	S. Preston N.E.	A							
" 17	S. Birmingham City	H	3-00						
" 24	S. F.A. CUP 4								
" 31	S. Huddersfield T.	A							
Feb. 7	S. Watford (5)	H	3-00						
" 14	S. Cardiff City	A							
" 21	S. Oxford Utd. (6)	H	3-00						
" 28	S. Portsmouth	A							
Mar. 7	S. Charlton Ath. (L.C.F.)	H	3-00						
" 14	S. Sheffield Utd. (S.F.)	A							
" 21	S. Blackpool	H	3-00						
" 27	F. Queens Pk. Rngs.	A							
" 28	S. Blackburn Rvrs.	A							
" 31	T. Bristol City	H	7-30						
April 4	S. Bolton Wndrs.	A							
" 11	S. F.A. CUP FINAL								
" 14	T. Leicester City	H	7-30						

OTHER MATCHES

Sept. 2	T. Huddersfield T.	H	7-30	2	0	L. Cup (2)	11,198	£2,817
" 24	W. Blackburn R.	H	7-30	2	1	L. Cup (3)	11,748	£2,959
Oct. 15	W. Leeds or Chelsea	H	7-30			L. Cup (4)		

For Security, Courtesy and Efficiency
BET WITH

**ROBERT DOWNIE & SON
Ltd.**

Members of B.P.A.

COMMISSION AGENTS

23 JOHN STREET : CARLISLE

Telephone 25401-6

MACKAY BROS. & CO.

1, The Crescent : Carlisle

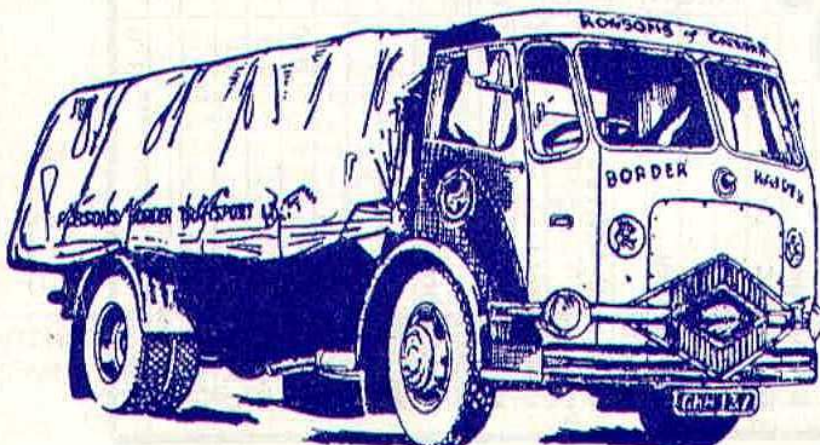
FOR YOUR SELF-DRIVE HIRE CAR

Fords & 1100's at Low Rates

Telephone: 25141-42

DIVISION II.—STATISTICS

	HOME					AWAY					Attendances		Top Goalscorers			
	P	W	D	L	F	A	W	D	L	F	A	Pts.		Highest	Total	
Q.P.R.	12	6	0	0	22	5	3	1	2	7	8	19	22,799	117,709	Bridges	10
Sheffield Utd.	13	6	1	0	12	1	2	1	3	11	9	18	22,528	116,551	Tudor 6, Woodward	6
Blackburn R.	12	5	0	1	15	3	2	3	1	3	2	17	15,945	75,422	Martin	7
Huddersfield T.	12	5	0	1	11	3	2	3	1	8	7	17	15,486	75,007	Dobson	6
Leicester C.	12	4	2	1	15	8	2	2	1	5	4	16	35,168	189,162	Lockhead	6
Swindon T.	13	3	3	0	12	5	2	2	3	7	9	15	22,352	120,369	Horsfield	7
Cardiff C.	12	3	3	0	10	6	2	1	3	8	8	14	30,083	147,514	Toshack	9
Carlisle Utd.	12	4	1	2	8	8	1	2	2	7	9	13	12,578	76,813	Hatton	5
Hull City	13	4	2	0	9	3	1	0	6	9	16	12	12,242	65,321	Chilton	5
Blackpool	12	4	2	1	10	8	1	0	4	4	12	12	21,038	124,260	Pickering	4
Norwich C.	13	4	2	0	9	3	1	0	6	3	15	12	18,695	95,018	Conlon 3, Foggo	3
Charlton A.	13	3	3	1	8	6	0	3	3	3	16	12	15,971	93,489	Crawford	4
Birmingham C.	12	3	2	1	11	7	1	1	4	2	9	11	32,660	167,037	Summerill	6
Middlesbrough	13	4	1	1	8	4	0	2	5	2	15	11	22,159	108,231	Hickton	4
Bristol C.	11	4	1	1	13	2	0	1	4	2	10	10	23,237	102,006	Galley	7
Bolton W.	12	4	0	2	10	4	0	2	4	6	11	10	14,702	66,526	Byrom	6
Oxford Utd.	11	1	3	2	4	6	2	1	2	4	4	10	12,620	64,379	Atkinson, G.	4
Portsmouth	12	1	1	3	5	12	2	3	2	8	7	10	21,969	92,094	Hiron	4
Preston N.E.	12	2	2	1	5	2	0	3	4	3	8	9	17,125	60,663	Irvine	3
Watford	12	1	2	3	5	6	1	1	4	5	9	7	26,968	114,112	Endean	3
Millwall	12	1	3	1	7	6	0	2	5	7	18	7	19,819	68,238	Possee	5
Aston Villa	12	1	2	3	5	8	0	2	4	2	9	6	33,838	168,918	Rudge	3



Road Transport
Always at your service
**Robson's Border
Transport Ltd.**
Managing Director:
S. ROBSON
**DURRANHILL ROAD,
CARLISLE**
Carlisle 25205 (6 lines)
Haltwhistle 364 & 409.

SPORTSMAN'S INN

SPRINGFIELD, GREYSTOKE, PENRITH

Telephone: Greystoke 231.

Free House. Midway between Penrith and Keswick on the A.66.

☆

Special Feature: "Fireman's Bar"

☆

Enjoy a meal after the match in the Sun Lounge with panoramic view of the Fells.

☆

Music Saturdays & Sundays by The Blencathra Duo.

Russian watches in great variety

from £4/9/6.

Swiss watches from £6.6.0 to £105.0.0

Super selection of Rings & other Jewellery

☆

W. BAR

JEWELLER

☆

3 THE CRESCENT,
CARLISLE. Telephone: 24348

THE MAN IN THE MIDDLE

SID KAYLEY was serving in the R.A.F. in the Middle East when he started refereeing in 1947. After demob he officiated in local football until rising to the Lancashire League.

He became a Football League linesman in 1957, serving in this capacity for six years until his elevation to the League referees' list. In 1968 he refereed the Scotland v. Wales amateur international at Hampden Park. Most of his spare time is devoted to soccer — he is a committee member of the Preston Referees Society and the Preston Amateur Football League. And he's also a soccer commentator! When he is not refereeing he helps with the hospital broadcasts relayed from Preston North End's ground.

Married with three sons, Mr. Kayley lives in Preston. He is a representative for a firm marketing surgical dressings.

NEXT HOME MATCHES

Wednesday, 15th October (7-30 p.m.)

LEEDS U. or CHELSEA

(Football League Cup 4th Round)

Saturday, 18th October (3-00 p.m.).

QUEENS PARK RANGERS

(Football League)

LUCKY PROGRAMME

The winning numbers at last Saturday's match versus Huddersfield Town were 869 and 3178. Neither holder came forward to claim the tickets for tonight's game.

Remember to listen in at half-time tonight. The two numbers announced will each win two Grandstand tickets for next week's League Cup tie.

derek dowell

Decorator, Contractor

☆

34 BEVERLEY RISE,

CARLISLE

☆

Tel. 27951

When in Carlisle, LUNCH and DINE at the
New Citadel Steak Bar & Restaurant
77/79 English Street.

STATE MANAGED HOTELS

J. T. & R. DUFTON

TYNE STREET - CARLISLE

MOTOR BODY REPAIRS

New and Used Cars

Light Commercials

Telephone: Carlisle 23507

Market Assembly Hall

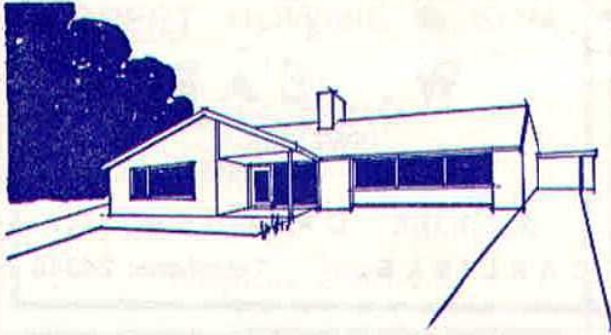
Buffet & Licensed Bar can be arranged. Available for Dances etc. (including Saturdays).

Apply: Markets Superintendent,
Scotch St., Carlisle. Tel. 22232

IVINSON GREENWOOD

Ltd.

tel. 22208



... homes for
elegant living

PLAYERS' VIEWPOINT



How the fortunes of a professional footballer can change. Not so long ago I was riding on the crest of a wave with Wolves, then sank into comparative mediocrity with Northampton Town who had been relegated to the Fourth Division last season, and here I am now with the Cumbrians helping them make a strong challenge for the top division.

I was happy when the opportunity came to join United, and along with the rest of the team am delighted with the start we have made to the season, not only in the League but also in the League Cup competition. For my own part, I hope goals will come and help bring success to the club.

The present Carlisle United side compares most favourably with the successful 1967 Wolves' team of which Hughie McIlmoyle and I were members.

There is a sense of confidence and purpose at Brunton Park and I am sure that a determined effort will see us Champions of Division Two this season.

.....
Autograph

BOB HATTON.

J. & M. STRICKLAND

HAULAGE & TARMACADAM

BLAW-KNOX MINI-PAVER P.F.20
FOR HIRE

Telephone: LOW IREBY 335

ESTIMATES FREE

D. A. & M. D. DOBSON

Petrol - Oil - Tyres - Repairs

Dykesfield, Burgh-by-Sands, Carlisle

Tel.: Burgh-by-Sands 284.

J. MUSGRAVE & SON

BUILDING CONTRACTORS

KNOTT HILL, ARMATHWAITE, CARLISLE

Tel.: Wetheral 696.

Telephone: Hallbankgate 244.

P. & H. M. FERGUSON

(Motor Engineers)

FELL VIEW SERVICE STATION

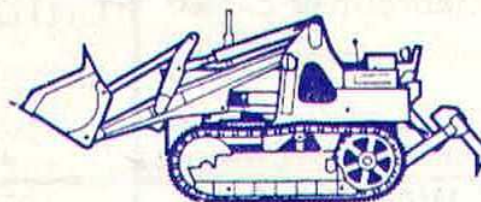
Hallbankgate : Brampton

Any make of car supplied M.O.T. Testing

Plumbing Gas Fitting
Small Bore Central Heating

A. J. HODGSON

2 MYDDLETON TERRACE,
SOUTH HENRY STREET, CARLISLE
Telephone 29642



JAMES HOPE
PLANT HIRE CONTRACTOR

EASTON BRIDGE
BURGH-BY-SANDS
Telephone 328.

WHAT THE PAPERS SAY

CARLISLE UNITED 0

If this is Division II's promotion race, my sympathy goes to the also rans. Seldom can so much effort have gone into so little productivity.

. . . I believe Carlisle, tucked away as they are on soccer's North-West frontier and pulling no more than 10,000 gates, have reached the plateau of their achievement. The team I saw yesterday certainly have. The thought of them going to Anfield or Goodison or even Derby as serious contenders is a product of an over-fertile imagination. For a start, they're too slow both in head and leg.

(Sunday Mirror).

Huddersfield Town 2

It was too much to expect that the benevolent soccer god who left his calling card at the Preston and Blackburn matches would once again become United's "12th man".

Fans are accustomed to the home side leaving their effort as late as Lester Piggott, but it was promotion-ambitious Huddersfield who packed the final punch to sew it up eight minutes from time.

No question that Huddersfield deserved it, but trying to picture either of these sides at Anfield or Old Trafford is like throwing a present-day Daniel to the lions.

Again it was the old story of United carrying as many passengers as an overloaded bus. (Sunday Sun).

The MATCH BALL tonight has been donated by
CARLISLE UNITED A.F. SUPPORTERS' CLUB

WHY NOT LEARN TO FLY

IT'S NOT AS DIFFICULT AS YOU THINK

FOR MORE INFORMATION CONTACT:

CUMBERLAND AVIATION SERVICES LTD.
CARLISLE AIRPORT, CARLISLE.

<p>STAND OUT IN CROWD USE OUR</p> <p>COIN-OP WASHETERIA</p> <p>141 RAFFLES AVENUE, CARLISLE</p> <p>Open Daily 8 a.m. - 9 p.m.</p>	<p>LINTON TWEEDS LTD.</p> <p>●</p> <p>RETAIL SHOP</p> <p>●</p> <p>SHADDON MILLS CARLISLE</p>	<p>COUNTY WINE CO.</p> <p>COURT SQUARE, CARLISLE</p> <p>●</p> <p>For all the best in WINES, SPIRITS, BEERS, Etc.</p> <p>●</p> <p>Tel.: Carlisle 27534</p>
--	---	--

CLUB NEWS

Football League Cup 4th Round, Wednesday, 15th October. Kick-off 7-30 p.m.

CARLISLE UNITED v. LEEDS UNITED OR CHELSEA

NOTICE TO GRANDSTAND SEASON TICKET HOLDERS:

Stand tickets for the above match will be on sale from tomorrow, 8th October. On this occasion ALL Grandstand Season Ticket holders can have their own seats providing application is made on **COUPON C.T.(4)** by **12 NOON** on **SATURDAY, 11th OCTOBER**. For this purpose the office will be open Wednesday to Friday from 9.15 a.m. to 5.15 p.m. and from 9.15 a.m. to 12 noon on Saturday. Postal applications should be accompanied by correct remittance and stamped, addressed envelope. **PROVIDING APPLICATION IS MADE BY 12 NOON ON 11th OCTOBER, TICKET PRICES WILL BE AS FOLLOWS:—** CENTRE STAND, 11/-; ALL OTHERS, 9/-. After the above deadline all seats will be 11/-. **ALL APPLICATIONS MUST BE MADE ON COUPON C.T.(4).**

NOTICE TO NON-SEASON TICKET HOLDERS:

All seats for this match will be 11/-. Tickets will be available from tomorrow morning. Admission to the Paddock and Ground will be by payment through the turnstiles at normal League match prices.

SUPPORTERS' CLUB bus trip to Watford on Saturday (members only). Departing from the Crescent at 11-30 p.m. Friday, returning after the match. Fare £2. Book at the Supporters' Club offices.

<p>LET US SOLVE YOUR CENTRAL HEATING PROBLEMS</p> <p>P. C. MURRAY (Carlisle) Ltd.</p> <p>24 PORTLAND SQUARE CARLISLE</p>	<p>4 B.C.</p> <p>IF WE'D HAVE BEEN AROUND IN THOSE DAYS, WE'D HAVE PROBABLY BUILT HADRIAN'S WALL</p> <p>BECK & LESLIE LTD. BUILDERS</p> <p>10, ACREDALE ROAD, CARLISLE</p>
<p>Telephone: ASPATRIA 444/5</p> <p>JOHNSTON BROTHERS (GILCRUX) LTD. HAULAGE CONTRACTORS — THE GARAGE, GILCRUX, ASPATRIA, CUMBERLAND. Loads 6-20 Tons: STORAGE & WAREHOUSING. DAILY SERVICES CUMBERLAND TO LANCASHIRE</p>	

KEN JONES DRIVING SCHOOL

RA.C. Registered and Ministry of Transport
Approved Driving Instructor

76 Warnell Drive, Harraby. Tel.: Carlisle 28709

Terms: 20/- per lesson using our car; 15/- per lesson using your car

For First Class Painting & Decorating . . .

W. LAIDLAW & SON

(Prop. Arthur Smith)

**CHURCH PLACE, CHURCH STREET,
STANWIX, CARLISLE. Tel. 21241**

Distance no object. Estimates Free

A. DONNELLY

BUILDERS & JOINERS : ROOFING

CONTRACTORS : MINOR REPAIRS

64 RAFFLES AVENUE, CARLISLE

Estimates Free.

Tel. 29553

CARLISLE

COIN & ANTIQUE CENTRE

Coins and Antiques Bought and Sold

21 GLOBE LANE : CARLISLE

Phone: Carlisle 28740

Telephone: Brampton 2034.

R. TUDDENHAM

Car and Commercial Repairs

Electric Welding : Bodywork

Spray Painting : Used Car Sales

**RAILHEAD GARAGE, STATION ROAD
BRAMPTON**

R. G. ROBSON

(Proprietor: T. W. Muir)

COAL & COKE MERCHANT

Depot: Bog Yard, Crown Street, Carlisle

Tel. No. Carlisle 24852

Give your car the beauty treatment . . .

Visit

G. BROWN

MOTOR SPARES

1, BRUNTON AVENUE, CARLISLE

R. IRVING

59 ESKDALE AVENUE

CARLISLE

MINIBUS SERVICE

Telephone 21777

V. S. TURNBULL

Landscape Gardener

Site clearance - Tree Felling - Garden
Rotavating - Hedge Cutting - Seeding
Paving, etc.

SOLWAY, WAVERTON. Tel. 2588

DAN CLARK & CO.

WANT ALL KINDS OF

SCRAP METAL

St. Nicholas Street, Carlisle Tel. 21174

Cathay Restaurant

Fully Licensed

93 LOWTHER STREET, CARLISLE

Tel.: Carlisle 21020

Special attention to Football
Supporters, and Parties Catered for.

J. & M. EDMONDSON

Daily Supplies of

FRESH ABERDEEN FISH

HIGH QUALITY FRUIT & VEGETABLES

**93 BLACKWELL ROAD, CURROCK
CARLISLE. Telephone 24824**

MOTOR CYCLE SPECIALIST

Your Honda Dealer

NEIL SISSON

99 LONDON ROAD, CARLISLE

SALES AND REPAIRS

M.O.T. & M.A.A. Member

Tel. Carlisle 28673

**FLY A RADIO CONTROLLED
MODEL AEROPLANE, YOURSELF!**
Contact us for FREE trial without obligation.
You will enjoy the Experience! All the leading
makes in Model Aircraft and Boat Kits,
Radio Control, Engines, Fuel, Balsa Wood
and Accessories, Etc.

WATSONS. Telephone 26125

33 Boundary Road, Carlisle

HAIR IS OUR BUSINESS . . .

J. ROWLEY, Hairdresser

2 MARKET PLACE, BRAMPTON,
CUMBERLAND.

YOU CAN ALWAYS GET PETROL AT
MORTON FILLING STATION
FIRST WITH SELF-SERVICE

FIRES & FIREPLACES, COOKERS
AND BOILERS, KITCHEN AND
BATHROOM EQUIPMENT

—choose from the widest
selection in the Border Area—

COULTHARDS

Crown Street, Carlisle

SHOWROOM OPEN DAILY:
9 a.m. — 5-15 p.m.
SATURDAY: 9 a.m.-12-30 p.m.

A GOAL WORTH STRIVING FOR



A HOME FOR
YOUR SAVINGS
OR YOUR
FAMILY

Established
1850

THROUGH THE:

**CUMBERLAND
BUILDING SOCIETY**
38 FISHER STREET, CARLISLE

TODAY'S TEAMS AND OFFICIALS

CARLISLE UTD.
Blue Shirts

A. ROSS
D. HEMSTEAD
T. CALDWELL
S. TERNENT
G. WINSTANLEY
W. O'NEILL
F. BARTON
T. MURRAY
R. HATTON
C. BALDERSTONE
G. McVITIE
T. PASSMOOR

SWINDON TOWN
Red Shirts

P. DOWNSBOROUGH
R. THOMAS
N. TROLLOPE
J. BUTLER
F. BURROWS
S. HARLAND
D. HEATH
A. HORSFIELD
R. SMART
P. NOBLE
D. ROGERS
C. JONES

1
2
3
4
5
6
7
8
9
10
11
12

Referee: **S. J. KAYLEY**, Preston.

Linesmen: **J. H. Brown** (red flag); **T. R. Smith** (orange flag).

JAMES BIRD

Builder and Engineering Contractor
PRIOR RIGG, BELLE VUE, CARLISLE
Telephone 23914

ALL TYPES

Farm & Industrial Buildings: Barns, Byres, Cattle
Courts, Covered Yards, Lofted Cattle Sheds (as
above), Garages, Concreting, Farmyards, Site
Clearing, Sludge and Septic Tanks and Welding.

ALL SIZES

Steel Trusses, Doors, Gates, Tipping Trailers.

E. T. ROBERTS LTD.
32 LOWTHER STREET, CARLISLE
Tel. No. 27661/2

TELEVISION - RADIO
RECORDS
AND MUSIC DEALERS